



Prostal Limited.

1F., No.40, Aly. 22, Ln. 143, Ruiping Rd., Yangmei Disty, Taoyuan City 32658, Taiwan

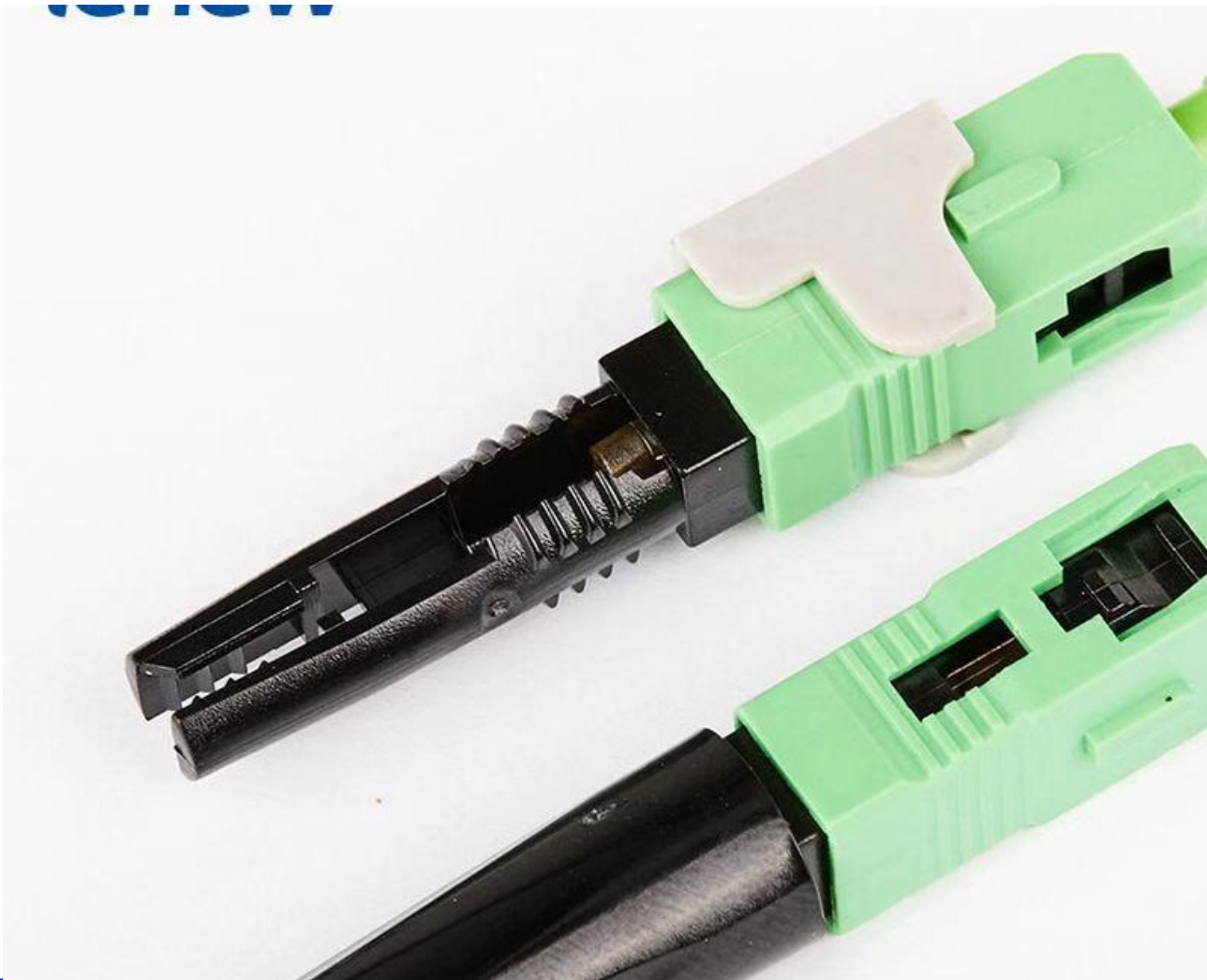
TEL: +886-3-4828372 Fax: +886-3-4828377

URL: www.prostal.com.tw E-MAIL: joan@prostal.com.tw

Vat number: 24849130

Fiber Optic Fast Connector Embedded Type

Model No.: SC-PLH08



Product Description

Quick Assembly SC APC AND SC UPC connector can provide quick and easy terminations of fibers in the field, and options are available for 900 micron and 250 micron. It allows the installer to terminate and make connection in minutes at equipment and fiber patch panels. This connector system with features of high installation quality, high success rate and high reliability.



Prostal Limited.

Vat number: 24849130

1F., No.40, Aly. 22, Ln. 143, Ruiping Rd., Yangmei Disty, Taoyuan City 32658, Taiwan

TEL: +886-3-4828372 Fax: +886-3-4828377

URL: www.prostal.com.tw E-MAIL: joan@prostal.com.tw

Features:

- 1) No special tools needed when installed
- 2) Without any gluing and polishing process
- 3) Can be made on-site without splicing connectors.
- 4) Only 30 seconds needed to learn the process of installation
- 5) Good high temperature performance and good sealing
- 6) Easy installation, quick and fast in the assembly field.
- 7) High return loss and low insertion loss
Repeat operation times up to 100
- 8) Warranty: One year.
- 9) Good durability
- 10) Can be installed in two minutes
- 11) Can be installed and maked repeatedly,reusable and
repeat operation times up to 100
- 12) High success rate
- 13) High installation
- 14) High reliability

Applications

1. Modification of Optical Fiber Room
2. Distribution Frames&Patch Panels
3. Fiber Optic Patch Cord & Pigtail
4. Telecommunication Networks
5. Data Processing Networks
6. FTTH (Fiber To The Home)

7. Local Area Network(LAN)
8. Test Equipment
9. CATV&CCTV
10. FTTX

Packing & Delivery

Packaging Detail: Blister box or upon customer's request

10 pieces /Blister box

10 blister boxes/ Small box

10 small boxes/ Carton

Product Technical Parameters

Item	Technical Parameters
Application scope	3.1*2.0mm butterfly optical cable
Fiber diameter	125 μ m (657A & 657B)
Tight cladding diameter	250 μ m&900 μ m
Application mode	Single mode
Operation time	About 15s(exclude fiber cut)
Insertion loss	≤ 0.3 dB (1310nm & 1550nm)
Return loss	APC ≥ 50 dB,UPC ≥ 45 dB
Success rate	$>98\%$
Assembly times	>10 times
Bare fiber tightening force	>5 N
Tight cladding clamp force	>8 N
Tensile strength	>50 N
Operating temperature	-40 \sim +85 $^{\circ}$ C
Online stretching resistance test (30 N)	Δ IL ≤ 0.3 dB
Mechanical permanence (500 times)	Δ IL ≤ 0.3 dB
Drop test (4m high concrete floor /each direction one time , total 3 times)	Δ IL ≤ 0.3 dB



Prostal Limited.

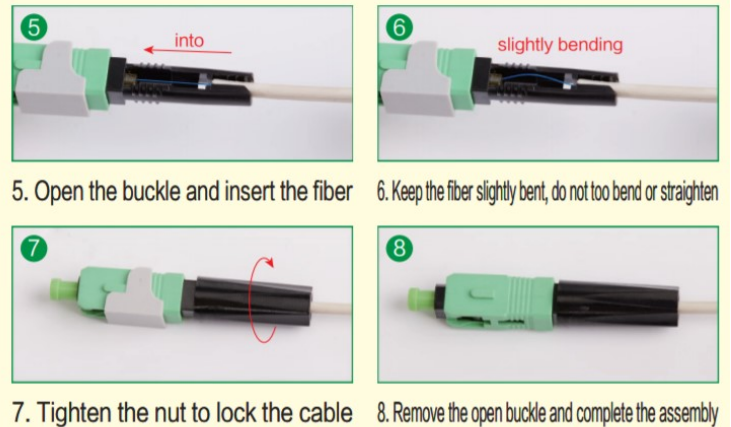
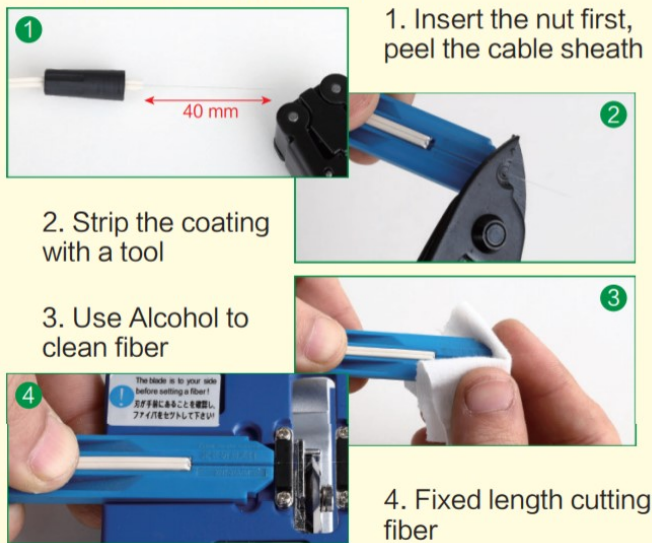
1F., No.40, Aly. 22, Ln. 143, Ruiping Rd., Yangmei Disty, Taoyuan City 32658, Taiwan

TEL: +886-3-4828372 Fax: +886-3-4828377

URL: www.prostal.com.tw E-MAIL: joan@prostal.com.tw

Vat number: 24849130

SC-APC-B pre-embedded field assembled fiber optic connector manual



Operational attention:

1. Wipe the fiber first and then cut it. Do not wipe it after cutting.
2. Keep the fiber slightly bent, do not bend too much or straighten

Please read before use:

The optical fiber must be cut with a good cutting knife. The only premise is to prohibit the fiber from being cut off by any other means. The total length of the device cannot be turned on as shown in the figure. Confirm that the bare fiber penetrates the fiber in the range of 10mm to keep the microbend. Straight, after tightening the nut, the lock switch has a large loss or fiber breakage. The fiber length is >10mm, resulting in unused cutters. Unusual cutting will cause communication interruption.

SC-APC Flat cable type

