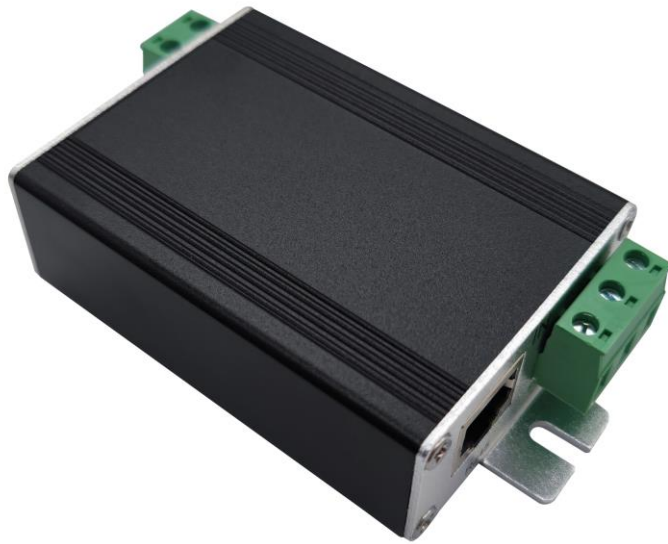


***Prostal***

**Model PSP-005EP**

**Ethernet / Power Surge Protector**

**Product Datasheet**



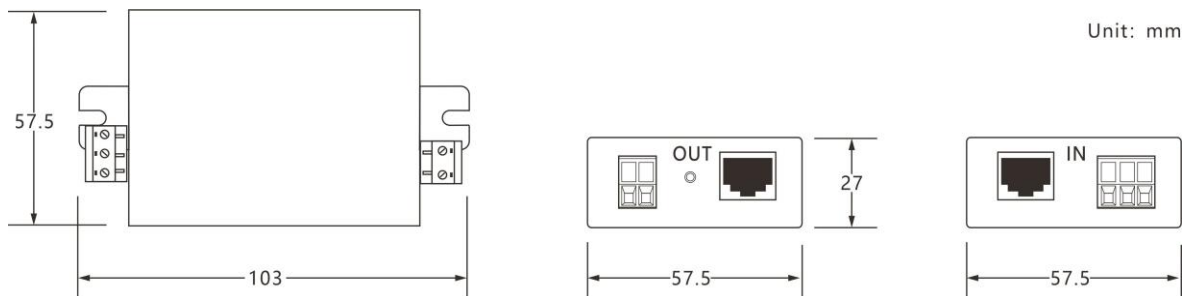
[www.prostal.com.tw](http://www.prostal.com.tw)

**PSP-005EP** is Ethernet & Power Surge Protector. It can protect network and power signals at the same time. It protects IP cameras, network switches, servers, modem, network terminals and other network communication equipment in surveillance systems.

## Features

- ◆ Compact size with an aluminum alloy casing, anti-static
- ◆ Suitable for protecting single-port power and network signals
- ◆ High discharge capacity, low residual voltage and minimal insertion loss
- ◆ Built-in self-restoring discharge element for long service life

## Dimension



**Note: Dimension error value  $\pm 1$  mm**

## Technical Parameter

Category	Description	
Signal Type	Network	Power
Working Voltage Un (V)	5	12/24
Limiting Voltage Up (V)	20	60
Normal Discharge Current In (kA)	5	
Maximum Discharge Current I <sub>max</sub> (kA)	10	
Response Time (ns)	1	<25
Insert Loss (dB)	≤0.05	
Transmission Rate (bit/s)	100M	
Terminal Type	RJ45 / screw terminal	
Net Weight (g)	105/PC	
Working Temperature	-40°C ~ +80°C	
Working Humidity	<95% Non-condensation	

## Installation Diagram



## Installation Instructions

	No	Step
	1	Connect Cat5/6 cable to IN (1)
	2	Connect the protected device of computer and network switches to OUT (2)
	3	Connect low voltage outside line to surge protector positive pole (3)
	4	Connect low voltage outside line to surge protector negative pole (4)
	5	Connect low voltage inside line to surge protector positive pole (5)
	6	Connect low voltage inside line to surge protector negative pole (6)
	7	Connect ground lead (7) to the grounding device